



## NOVA

FASTCAM series by Photron

### FASTCAM NOVA R2

**4-Megapixel CMOS Image Sensor:**

2048 x 2048 pixels at 1,440fps

1920 x 1080 pixels at 2,560fps

**Maximum Frame Rate:**

100,000fps (Nova R2 type 100K)

**Class Leading Light Sensitivity:**

ISO 6,400 monochrome

ISO 2,000 color

**Global Electronic Shutter:**1ms to 2.7 $\mu$ s independent of frame rate**Dynamic Range (ADC):**

12-bit monochrome

36-bit color

**Compact and Lightweight:**

120mm (H) x 120mm (W) x 217.2mm (D)

4.72" (H) x 4.72" (W) x 8.55" (D)

Weight: 3.3kg (7.2 lbs.)

**Internal Recording Memory:**

8GB, 16GB, 32GB, 64GB, 128GB

**Optional FASTDrive Removable High Capacity Data Storage:**

1 &amp; 4 TB High-speed Solid State Drive

**Fast 10-Gigabit Ethernet Interface:**

Provides camera control and high-speed image download to standard notebook/PC

**Fan Stop Function:**

Remotely switch off cooling fans to eliminate vibration when recording at high magnifications

## Compact and versatile high performance camera system

The FASTCAM NOVA R2 brings together unique CMOS image sensor technologies and extensive high-speed digital imaging expertise to provide a camera with the flexibility to be used in a wide variety of applications. The FASTCAM NOVA R2 offers 12-bit image recording rates up to 1,440 frames per second (fps) at 4-megapixel image resolution, and shutter speeds to 2.7 $\mu$ s. Recording rates to 100,000fps are available at reduced image resolutions. All of this available from a camera that is rugged, compact, lightweight and provides the best light sensitivity in its class.

Standard features of the FASTCAM NOVA R2 include an internal mechanical shutter to allow remote system calibration, a high-performance 10-Gigabit Ethernet interface for camera control and high-speed image download, memory segmentation that allows recording into one memory partition while downloading from another, and compatibility with a number of industry standard lens formats to allow the use of Nikon G-Type, C-mount and Canon EF lenses.

The FASTCAM NOVA R2 also features a "sealed body" design that prevents dust and corrosive particles from contaminating sensitive electronics. An optional FASTDrive SSD can be used for the download of images at up to 1GB per second.

Intuitive and feature rich Photron FASTCAM Viewer (PFV) software is included with each FASTCAM NOVA R2 camera. Also included is a Photron Device Control SDK that allows integration of the camera with user-specific software, and libraries for controlling the camera within a MATLAB® or LabView environment.



**Light Sensitivity:**

FASTCAM NOVA	
Monochrome models	ISO 6,400
Color models	ISO 2,000

Monochrome sensors used in the FASTCAM NOVA R2 are supplied without an IR absorbing filter, extending the camera spectral response beyond 900nm. When the sensitivity of the FASTCAM NOVA R2 is measured to tungsten light including near IR response an equivalent value of ISO 16,000 is obtained.

**Image Sensor:**  
The FASTCAM NOVA R2 uses an advanced CMOS image sensor optimized for light sensitivity and high image quality that is unique to Photron.

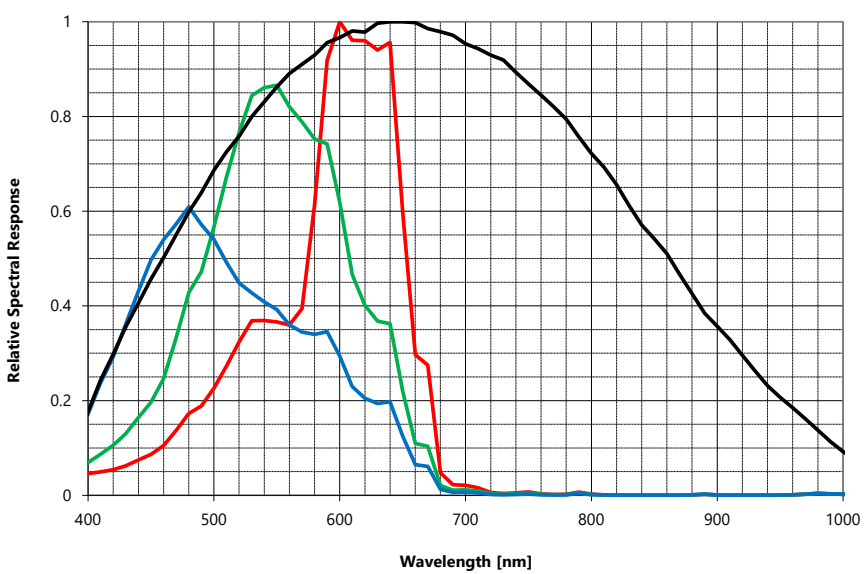
A 10-micron pixel pitch gives a sensor size at full image resolution of 20.48 x 20.48mm (diagonal 28.96mm).

Lenses designed for both FX (35mm full frame) and also DX (APS-C digital SLR) formats are fully compatible with the FASTCAM NOVA R2 at full image resolution.

Sensor Type	Proprietary Design Advanced CMOS
Maximum Resolution (pixels)	2048 x 2048 pixels
Sensor Size / Diagonal	20.48 x 20.48mm / 28.96mm
Pixel Size (microns)	10µm x 10µm
Quantum Efficiency	43.8% at 630nm
Fill Factor	42%
Color Matrix	Bayer CFA (single sensor)
Light Sensitivity	ISO 6,400 monochrome ISO 2,000 color (monochrome sensor equivalent ISO 16,000 including near IR response)

Shutter: Global Electronic Shutter 1ms to 2.7µs independent of frame rate

FASTCAM Nova R2 Relative Spectral Response Curves - Monochrome and Color



Specifications subject to change.

## Camera Performance Specifications

<b>Model</b>	<b>FASTCAM Nova R2</b>
Full Frame Performance	1,440fps 2048 x 2048 pixels
Maximum Frame Rate	100,000fps (256 x 32 pixels)
Minimum Exposure Time	Global electronic shutter to 2.7 $\mu$ s selectable independent of frame rate (subject to export control)
Ruggedized Mechanical Calibration Shutter	Standard feature
Dynamic Range (ADC)	12-bit monochrome 36-bit color
Memory Capacity Options	8GB, 16GB, 32GB and 64GB
Memory Partitions	Up to 128 memory segments
Region of Interest	Selectable in steps of 128 pixels (horizontal) x 16 pixels (vertical)
Trigger Inputs	Selectable +/- TTL 5V and switch closure
Trigger Delay	Programmable on selected input / output triggers: 100ns resolution
Input / Output	Input: Trigger (TTL/Switch), sync, ready, event, IRIG Output: trigger, sync, ready, rec, exposure
Trigger Modes	Start, end, center, manual, random, random reset
Time Code Input	IRIG-B (selectable at beginning or end of frame exposure)
External Sync	+/- TTL 5Vp-p Variable frequency sync
Camera Control Interface	High-speed Gigabit Ethernet
Image Data Display	Frame rate, shutter speed, trigger mode, date/time, status, real time / IRIG time, frame count, resolution
Saved Image Formats	BMP, TIFF, JPEG, PNG, RAWW, MRAW, AVI, MOV - Images can be saved with or without image data and in 8-bit, 16-bit or 36-bit depth of sensor where supported
Supported OS	Microsoft Windows operating system including: 8.1, 10 (32/64-bit)

### Optional Removable Data Storage:

The FASTCAM NOVA R2 can be supplied with the Photron FASTDrive high capacity removable SSD. The ultra-high data rate FASTDrive allows a 64GB camera recording to be transferred to a removable SSD drive in approximately 1 minute. Recorded data can then be directly accessed while coupled to the camera or the drive may be removed and inserted into the portable FASTDock station connected to any Windows PC.

### High-Speed Gigabit Ethernet Interface:

The FASTCAM NOVA R2 camera system is equipped with a high-speed 10-Gigabit Ethernet Interface to provide reliable camera control and fast download of image data.

### Dedicated I/O:

A dedicated BNC connection for a contact closure hardware trigger input is provided. In addition, two programmable inputs and two programmable output channels provide direct connection for common tasks such as synchronization of multiple cameras and operation in conjunction with Data Acquisition (DAQ) hardware.

### Ruggedized Mechanical Calibration Shutter:

The ruggedized mechanical shutter fitted as standard to the FASTCAM NOVA R2 camera allows sensor black balance calibration to be carried out remotely from the system control software.

### Nikon G-Type Compatible Lens Mount:

The FASTCAM NOVA R2 camera is equipped with an objective lens mount compatible with readily available Nikon G-type lenses. Controls provided within the lens mount allow the control of lens aperture on lenses without external iris control.

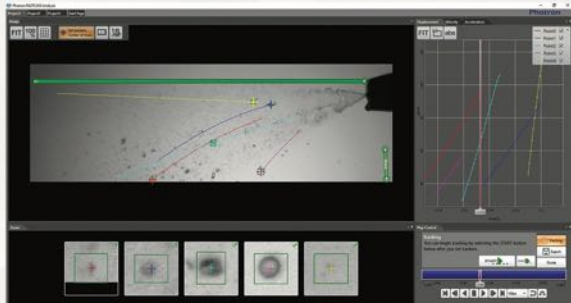
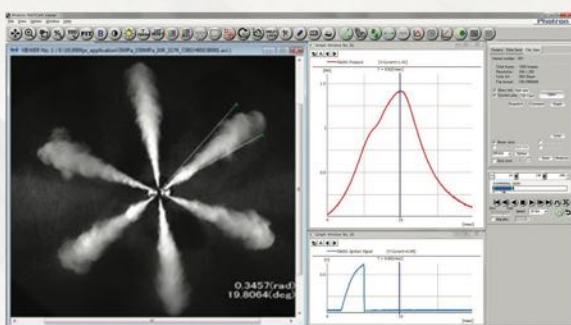


## Camera Operation Features

Frame Synchronization	Accurate frame synchronization with other cameras and with external and unstable frequencies.
Dual Slope Shutter (Extended Dynamic Range)	Selectable in 20 steps (0 to 95% in 5% increments) to prevent pixel overexposure without post processing.
Memory Partitions	Up to 128 memory segments allow multiple events to be stored in camera memory before downloading, with automatic progression to the next available partition.
Low Light Mode	Operation at minimum frame rate with separately adjustable shutter time to allow easy camera set-up and focus in ambient lighting.
IRIG Phase Lock	Enables multiple cameras to be synchronized together with other instrumentation equipment or to a master external time source.
Internal Time Delay Generator	Allows programmable delays to be set on input and output triggers; 100ns resolution.
Event Markers	Up to ten user-entered event markers to define specific events within the recorded image sequence .
Download While Recording	FASTCAM NOVA R2 supports Partition Recording Mode, allowing image data captured in one memory partition to be downloaded while at the same time recording into another partition.
Automatic Download	The system can be set to automatically download image data to the control PC and, when download is complete to re-arm in readiness for the next trigger with automatically incremented file names.
Software Binning	Virtual pixel binning (2x2, 4x4 etc.) allows increased light sensitivity with reduced image resolution without changing camera field of view.
FASTDrive	Optional 1&4 TB solid state drive (SSD) memory pack provides ultra high data rate transfer to removable media.

## Operation Software Features

Image Calibration	2D image calibration allows the measurement of distance and angle from the image. A calibration grid overlay can be superimposed on the image.
Image Overlay	A stored reference image may be overlaid on the live image to allow accurate camera positioning to achieve the same view as a previous test.
Import of Multiple Image Sequences	Multiple image sequences can be loaded and simultaneously replayed. Timing of image sequences can be adjusted to create a common time reference. Time based synchronization allows images captured at different frame rates to be synchronized.
High Dynamic Range Mode	Making use of the full sensor dynamic range, HDR mode allows enhanced detail in both light and dark areas of an image to be displayed simultaneously.
Background Subtraction	In order to highlight subtle changes in an image, Background Subtraction allows a reference image to be subtracted from a recorded sequence. Details including propagation of shock waves and surface changes during impact can be visualized using the feature.
Line Profile	A line profile representing grey levels along a line drawn across any region of the image is displayed. In live mode the Line Profile can be used to ensure optimum image focus is achieved.
Histogram	A histogram displaying grey levels within a user-defined image area is displayed. In live mode the Histogram can be used to ensure that optimum exposure levels are set for the scene being recorded.



### Photron FASTCAM Viewer:

Photron FASTCAM Viewer software (PFV) has been designed to provide an intuitive and feature rich user interface for the control of Photron high-speed cameras, data saving, image replay and simple motion analysis. Advanced operation menus provide access to features for advanced camera operation and image enhancement. Tools are provided to allow image calibration and easy measurement of angles and distances from image data. Also included are a C++ SDK and wrappers for LabView and MATLAB ®.

An optional software plug-in module provides synchronization between Photron high-speed cameras and data acquired through National Instruments data acquisition systems. Synchronized data captured by the DAQ system provides waveform information which can be viewed alongside high-speed camera images.

### Photron FASTCAM Analysis:

PFV software allows image sequences to be exported directly to optional Photron FASTCAM Analysis (PFA) Motion Analysis software. This entry level Motion Analysis software with an on screen 'step by step guide' function provides automated tracking of up to 5 points using feature or correlation tracking algorithms for the automated analysis of motion within an image sequence.

Nova R2									
Resolution (h x v pixels)	Frame Rate Max fps	8GB		16GB		32GB		64GB	
		Frames	Time (sec)**	Frames	Time (sec)**	Frames	Time (sec)**	Frames	Time (sec)**
2048 x 2048	1,440	1,338	0.93	2,703	1.88	5,434	3.77	10,895	7.57
2048 x 1600	1,800	1,712	0.95	3,460	1.92	6,955	3.86	13,946	7.75
2048 x 1440	2,000	1,903	0.95	3,845	1.92	7,728	3.86	15,496	7.75
2048 x 1088	2,560	2,519	0.98	5,089	1.99	10,229	4.00	20,509	8.01
1536 x 1024	3,000	3,569	1.19	7,210	2.40	14,492	4.83	29,055	9.69
1280 x 1280	3,000	3,426	1.14	6,922	2.31	13,912	4.64	27,893	9.30
1280 x 800	4,800	5,483	1.14	11,075	2.31	22,260	4.64	44,630	9.30
1024 x 1024	4,000	5,355	1.34	10,816	2.70	21,739	5.43	43,584	10.90
1024 x 576	7,500	9,520	1.27	19,229	2.56	38,647	5.15	77,484	10.33
768 x 768	6,400	9,520	1.49	19,229	3.00	38,647	6.04	77,484	12.11
768 x 512	9,000	14,281	1.59	28,845	3.21	57,972	6.44	116,226	12.91
512 x 512	10,000	21,423	2.14	43,268	4.33	86,959	8.70	174,340	17.43
256 x 256	24,000	85,695	3.57	173,076	7.21	347,839	14.49	697,364	29.06
256 x 128	40,000	171,391	4.28	346,153	8.65	695,679	17.39	1,394,729	34.87
256 x 32	100,000	685,567	6.86	1,384,617	13.85	2,782,719	27.83	5,578,921	55.79

\* Specifications subject to change without notice.

\*\* Recording time is an estimate and may be different depending on recording conditions and settings.

### Variable Region of Interest:

Region of Interest (ROI) or sub-windowing allows a user-specified portion of the sensor to be defined to capture images. By using a reduced portion of the image area, the frame rate at which images are recorded can be increased. FASTCAM NOVA R2 allows the ROI to be set in increments of 256 pixels horizontal and 32 pixels vertical.

### Square Image Sensor Format:

Unlike broadcast and media applications where image formats such as 16:9 have now become standard, in scientific and industrial imaging applications an image sensor with a 1:1 image format is generally accepted to be advantageous. To capture the maximum useful image data in applications including microscopy, detonics, combustion imaging and many others, a 1:1 sensor format provides greater flexibility than 'letterbox' image formats. The FASTCAM NOVA R2 image sensor allows the user to choose either square or rectangular image formats in order to obtain the maximum subject information.

### External Frame Synchronization:

The FASTCAM NOVA R2 can be fully synchronized with an external event to allow the timing of when each individual image is captured to be precisely referenced. The camera can be accurately synchronized to unstable frequencies allowing complex events such as combustion in rapidly accelerating or decelerating engines to be recorded and studied.

### Record During Download Operation:

FASTCAM NOVA R2 recording memory can be divided into multiple active sections. The user can record an on-going event in one memory partition while at the same time downloading a previously recorded image sequence in order to improve workflow and optimize camera operation.



# Mechanical and Environmental Specifications

## Mechanical and Environmental Specifications

Mechanical	
Lens Mount	F-mount (G-type lens compatible) and C-mount provided - Optional lens mounts available include Canon EF remote control mount
Camera Mountings	4 x M6 (base and side), 2 x 1/4 - 20 UNC (top),
External Dimensions	
Camera Body (excluding protrusions)	120mm (H) x 120mm (W) x 217.2mm (D) 4.72" (H) x 4.72" (W) x 8.55" (D)
Weight	
Camera Body	3.3kg (7.2lbs)
Environmental	
Operating Temperature	0 to 50C, 14° to 122°F
Storage Temperature	-20 to 60C, -4° to 140°F
Humidity	85% or less (non-condensing)
Cooling	Internal fan cooling (fan-off mode supported)
Operational Shock	30G, 11ms, 6-axes 10 times/axis
Power	
AC Power (with supplied adapter)	100 to 240V, 50 to 60Hz
DC Power	22 to 32V, 55VA



### Nikon G-Type Compatible Lens Mount:

The FASTCAM NOVA R2 camera is equipped with an objective lens mount compatible with readily available Nikon G-type lenses. Controls provided within the lens mount allow the control of lens aperture on lenses without external iris control.

### Canon EF Lens Mount Option:

An optional lens mount supporting Canon EF lenses is available for the FASTCAM NOVA R2 providing remote control of lens aperture and iris through Photron PFV software.

### Operation Environments:

The 'sealed body' design of the FASTCAM NOVA R2 ensures optimum air flow and prevents dust and corrosive particles from being ingested within the internal camera body where they can damage sensitive electronics. The fans may be disabled during recording for any vibration sensitive measurements.

The FASTCAM NOVA R2 camera has been extensively tested to ensure operation for extended periods in ambient temperatures up to 50 degrees C.

### Fan Stop Function:

Remotely switch off cooling fans to eliminate vibration when recording at high magnifications.

Specifications subject to change without notice.

PHOTRON USA, INC.  
9520 Padgett Street, Suite 110  
San Diego, CA 92126  
USA

Tel: 858.684.3555 or 800.585.2129  
Fax: 858.684.3558  
Email: [image@photron.com](mailto:image@photron.com)  
[www.photron.com](http://www.photron.com)

PHOTRON EUROPE LIMITED  
The Barn, Bottom Road  
West Wycombe, Bucks. HP14 4BS  
United Kingdom

Tel: +44 (0) 1494 481011  
Fax: +44 (0) 1494 487011  
Email: [image@photron.com](mailto:image@photron.com)  
[www.photron.com](http://www.photron.com)

PHOTRON (Shanghai)  
Room 20C, Zhao-Feng  
World Trade Building  
No. 369, JiangSu Road  
ChangNing District  
Shanghai, 200050 China  
Tel: +86 (0) 21-5268-3700  
Email: [info@photron.cn.com](mailto:info@photron.cn.com)  
[www.photron.cn.com](http://www.photron.cn.com)

PHOTRON LIMITED  
Kanda Jinbo-cho 1-105  
Chiyoda-ku, Tokyo 101-0051  
Japan

Tel: +81 (0) 3 3518-6271  
Fax: +81 (0) 3 3518-6279  
Email: [image@photron.co.jp](mailto:image@photron.co.jp)  
[www.photron.co.jp](http://www.photron.co.jp)